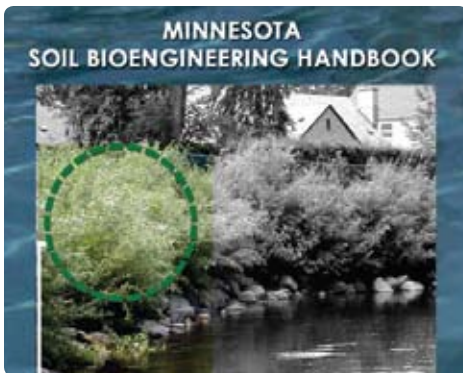


## Minnesota Soil Bioengineering Handbook

for Minnesota Department of Transportation



In consultation with the Minnesota Department of Transportation, the Kestrel Design Group produced the latest publication in a series to assist public agencies, designers, engineers, and contractors, with the best available and environmentally sensitive techniques for preserving riverine, aquatic and terrestrial landscape systems. Soil bioengineering is a self-repairing, self-sustaining approach that strengthens with age. It has resilience and the potential to persist for decades because its strength comes from living plants.

Kestrel Design Group applied more than a decade of experience implementing soil bioengineering techniques on the companies' own projects in the creation of a Best Management Practices document that provides practical guidance on the installation, benefits, history and application of soil bioengineering for professional users.

The Minnesota Soil Bioengineering Handbook uses both graphic and written documentation including plan details, photographs, species lists and descriptions to provide the best information currently available to land planners and managers for the implementation of Soil Bioengineering techniques. KDG's role in the project included graphic design, writing, detail drawing, photography of works, techniques research and providing the client with KDG's own sample drawings and project documentation to support the feasibility and applicability of soil bioengineering techniques.

**2006 Merit Award - Minnesota Chapter of the American Society of Landscape Architects (MASLA)**

### SERVICES WE PROVIDED

- + Best Management Practices
- + Sustainability Guidelines & Policy Planning



**KestrelDesignGroup**

7101 Ohms Lane  
Minneapolis, MN 55439

T 952 928 9600  
F 952 224 9860  
W [KestrelDesignGroup.com](http://KestrelDesignGroup.com)